

PAYONG PAGASA

LA NIÑA ADVISORY NO. 11

OVERVIEW

La Niña condition persists as cooling of the sea surface temperature (SST) re-establishes in the central Tropical Pacific. Most climate models suggest that La Niña condition will continue until Dec-Jan-Feb 2023 (55-70% chance) with ENSO-neutral conditions thereafter.

Issued: 04 August 2022



La Niña increases the likelihood of having above normal rainfall conditions across most areas of the country. Adverse impacts such as flooding and landslides are still expected over vulnerable areas and sectors of the country.

Assessment in July 2022

WEATHER SYSTEMS THAT AFFECTED THE COUNTRY

SW SOUTHWEST MONSOON (HABAGAT)
Warm moist winds from the southwest causing rains over the western portion of the country from May to September

E EASTERLIES
Warm winds blowing from the east that may bring cloudiness over the eastern part of the country

L LOW PRESSURE AREA (LPA)
Areas of lowest pressure characterized by cloudiness and rainshowers; areas where a tropical cyclone can form

III INTERTROPICAL CONVERGENCE ZONE (ITCZ)
Series of low pressure areas brought about by converging northeast (NE) and southeast (SE) winds that cause thunderstorms and rainshowers

W RIDGE OF HIGH PRESSURE AREA (HPA)
An extension of a high pressure area characterized by very light wind and clear skies

☁ LOCALIZED THUNDERSTORM
Isolated heavy and dense dark clouds with one or more sudden electric discharges manifested by lightning and thunder often accompanied by showers of rain.

6 1 TROPICAL CYCLONE
• Tropical Depression (TD) 'Ester' (July 29-31)

RAINFALL CONDITION

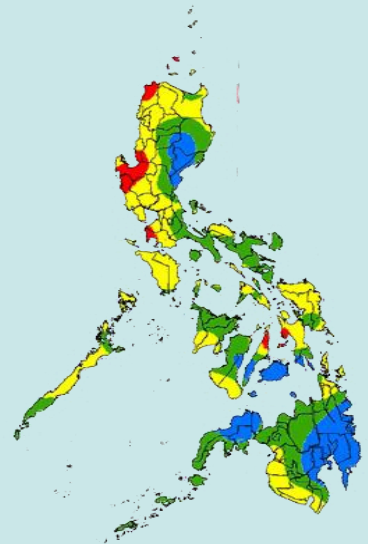
WAY BELOW NORMAL
Greater than 60% reduction from the normal*

BELOW NORMAL
20%-60% reduction from the normal

ABOVE NORMAL
120% greater than the normal

Rest of the Country

Davao Region, Camiguin, Misamis Occidental, Zamboanga del Norte, Southern Leyte, Bohol, Siquijor, Quirino and Aurora



TEMPERATURE

Most parts of the country experienced near-average to slightly warmer-than-average surface air temperatures except for some areas in Southern Luzon that experienced slightly cooler to cooler-than-average mean temperatures.

Mountainous Luzon
15.7°C – 26.7°C

Lowlands Luzon
19.2°C – 36.0°C

Metro Manila
23.0°C – 35.9°C

Visayas
21.0°C – 35.5°C

Mountainous Mindanao
18.5°C – 32.3°C

Lowlands Mindanao
21.2°C – 35.3°C



PAYONG PAGASA

LA NIÑA ADVISORY NO. 11

Issued: 04 August 2022

Outlook in August 2022

EXPECTED WEATHER SYSTEMS



SOUTHWEST MONSOON (HABAGAT)

Warm moist winds from the southwest causing rains over the western portion of the country from May to September



EASTERLIES

Warm winds blowing from the east that may bring cloudiness over the eastern part of the country



INTERTROPICAL CONVERGENCE ZONE (ITCZ)

Series of low pressure areas brought about by converging northeast (NE) and southeast (SE) winds that cause thunderstorms and rainshowers



LOW PRESSURE AREA (LPA)

Areas of lowest pressure characterized by cloudiness and rainshowers; areas where a tropical cyclone can form



RIDGE OF HIGH PRESSURE AREA (HPA)

An extension of a high pressure area characterized by very light wind and clear skies



LOCALIZED THUNDERSTORM

Isolated heavy and dense dark clouds with one or more sudden electric discharges manifested by lightning and thunder often accompanied by showers of rain.



2 or 3 TROPICAL CYCLONES

"Bagyo"; may refer to tropical depression, tropical storm, severe tropical storm, typhoon, or super typhoon.

RAINFALL CONDITION



NEAR NORMAL

+20% or -20% from the normal

Most areas of the country



BELOW NORMAL

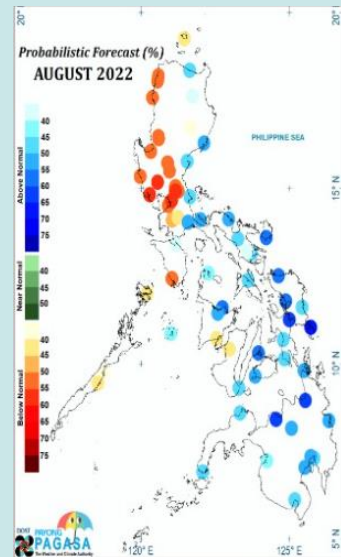
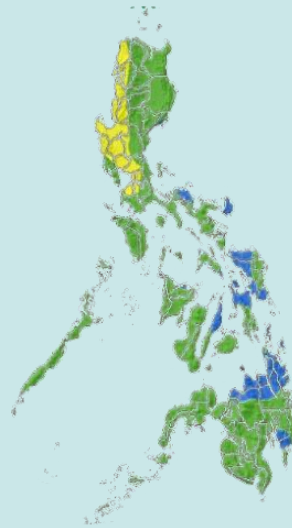
20%-60% reduction from the normal

- High probability of having below normal rainfall conditions in most areas in the western and central sections of Luzon
- High probability of having above normal rainfall conditions in portions of Eastern Visayas, CARAGA, Camarines Norte, Catanduanes, Camiguin, and Misamis Oriental



ABOVE NORMAL

120% greater than the normal



TEMPERATURE

Generally, near average to slightly cooler than average surface air temperatures are predicted in most parts of Luzon while near to slightly warmer than average is expected for most areas in the Visayas and Mindanao.



Mountainous Luzon
14.0°C to 27.5°C



Metro Manila
22.5°C to 37.0°C



Mountainous Mindanao
16.0°C to 33.5°C



Lowlands Luzon
17.0°C to 39.0°C



Visayas
20.5°C to 37.0°C



Lowlands Mindanao
21.0°C to 37.5°C